

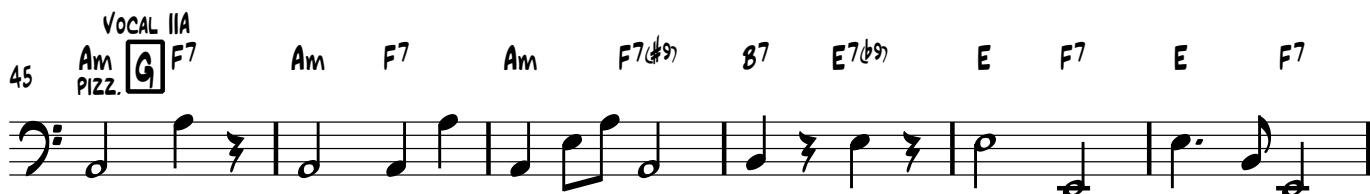
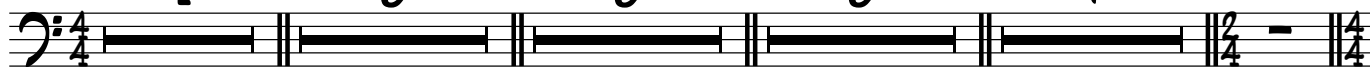
ΤΡΕΝΟ ΠΑΛΙΟ

CONTRABASS GOUBY
NANTINA KYRIAZH

ΓΙΩΡΓΟΣ ΚΑΖΑΝΤΖΗΣ

♩ = 90 0=DIM= ΤΡΕΙΣ ΝΟΤΕΣ (ΔΥΟ ΜΙΚΡΕΣ ΤΡΙΤΕΣ)

A INTRO 4 8 B VOCAL IA 8 C VOCAL IB 8 D REFRAIN IA 8 E REFRAIN IB 7



ΤΡΕΝΟ ΠΑΛΙΟ

CONTRABASS GOUBY

2 69 **J** REFRAIN II B F/A Am F7/A Am F/A Am A7 Dm Dm⁶ D#^o7

First musical staff (measures 69-74) in bass clef. It begins with a treble clef and a common time signature. The melody consists of eighth and quarter notes. A sharp sign is placed above the staff at measure 72.

75 E7 **K** FINALE Am Dm E Am

Second musical staff (measures 75-79) in bass clef. It starts with a treble clef and a common time signature. At measure 75, there is a double bar line followed by a 2/4 time signature. At measure 77, there is another double bar line followed by a 4/4 time signature. The melody continues with eighth and quarter notes.

80 Dm E Am Dm E Am

Third musical staff (measures 80-83) in bass clef. The melody continues with eighth and quarter notes.

84 Dm E Am Dm E Am

Fourth musical staff (measures 84-87) in bass clef. The melody continues with eighth and quarter notes.

88 Dm E Am Dm E Am

Fifth musical staff (measures 88-91) in bass clef. The melody continues with eighth and quarter notes.

92 Dm E Am Dm E Am

Sixth musical staff (measures 92-95) in bass clef. The melody continues with eighth and quarter notes.

96 Dm E Am Dm E Am

Seventh musical staff (measures 96-99) in bass clef. The melody continues with eighth and quarter notes.

100 Dm E Am Dm E

Eighth musical staff (measures 100-104) in bass clef. The melody concludes with a double bar line at the end of measure 104.