

# AFTI TI THALASSA

ACCORDION

POLYS KYRIAKOY

YORGOS KAZANTZIS

INTRO

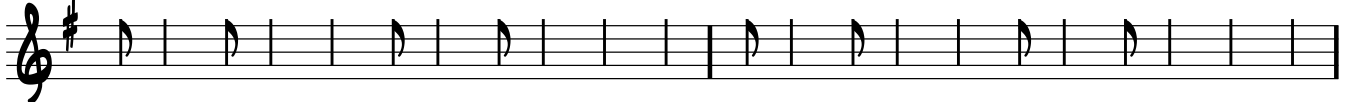
$\text{♩} = 70$   
INTRO I

2

VOCAL I



4 **D D/C Am B Am B Em Em/D Am/C Am**



6 **B D#° Cmaj7 B Em**

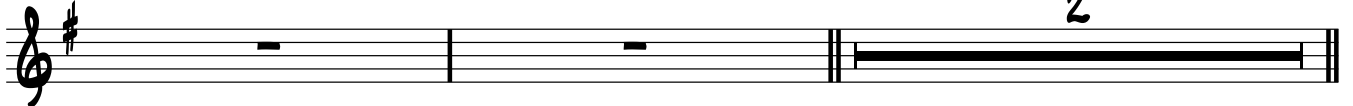


7 **E REFRAIN I Am B7 Em C Am D G**



9 **E Am B7 Em C Am B Em** INTRO II

2



13 VOCAL II

**D D/C Am B Am B**



15 **Em Em/D Am/C Am B D#° Cmaj7 B Em**



17 **E REFRAIN II**

**Am**

**B7**

**Em**



18 **C Am D G E Am B7 Em C Am B Em**



AFTI TI THALASSA  
ACCORDION

2

21 E Am B<sup>7</sup> Em C Am D G G/F#



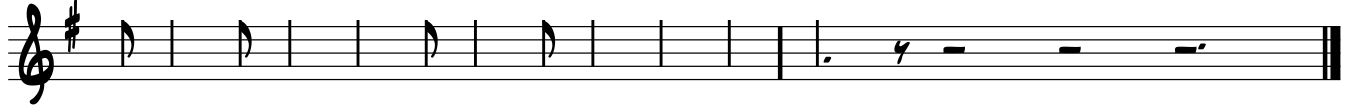
A musical staff in treble clef with a key signature of one sharp (F#). The staff contains a sequence of notes corresponding to the chords listed above: E (quarter), Am (quarter), B<sup>7</sup> (quarter), Em (quarter), C (quarter), Am (quarter), D (quarter), G (quarter), and G/F# (quarter). The notes are: E4, F#4, G4, A4, B4, C5, B4, A4, G4, F#4, E4, D4, C4, B3, A3, G3, F#3, E3.

23 E Am B<sup>7</sup> Em



A musical staff in treble clef with a key signature of one sharp (F#). The staff contains notes corresponding to the chords: E (quarter), Am (quarter), B<sup>7</sup> (quarter), and Em (quarter). The notes are: E4, F#4, G4, A4, B4, C5, B4, A4, G4, F#4, E4, D4, C4, B3, A3, G3, F#3, E3.

24 C Am B Em Em



A musical staff in treble clef with a key signature of one sharp (F#). The staff contains notes corresponding to the chords: C (quarter), Am (quarter), B (quarter), Em (quarter), and Em (quarter). The notes are: C4, B3, A3, G3, F#3, E3, D3, C3, B2, A2, G2, F#2, E2, D2, C2, B1, A1, G1, F#1, E1. The final two notes are followed by a double bar line.