

CONTRABASS

ΔΙΧΩΣ ΦΟΔΡΑ

ΓΙΑΝΝΗΣ ΠΑΝΟΥΤΣΟΠΟΥΛΟΣ

ΓΙΩΡΓΟΣ ΚΑΖΑΝΤΖΗΣ

♩=146

INTRO I **A** Dm

Am

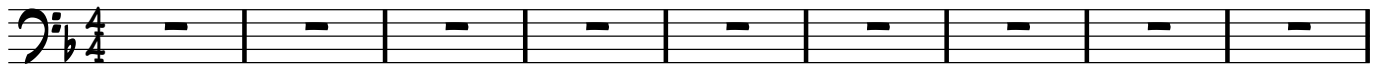
Bbmaj7

C

F

A

Dm



10 **B** VOCAL I A Dm

Am

Bb

C

Dm



21 Gm

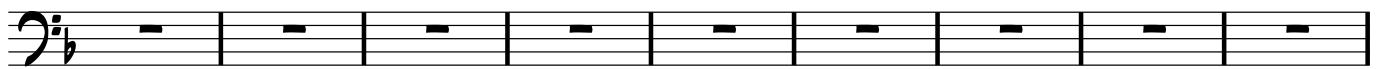
C

F

A

Dm

Gm



30 C

F

Bb

Am

E

A



38 **C** Dm VOCAL I B PIZZ.

Am

Bb

C

Dm



46 Gm

C

F

A

Dm



54 Gm

C

F

Bb

Am

E

A



62 **D** REFRAIN I Gm /F Eø7 Dm /C /Bb /A Gm7 Eø7



ΔΙΧΩΣ ΦΟΔΡΑ

CONTRABASS

2

69 A Gm /F E^ø7 Dm /C /B^b /A Gm⁷ A

77 **E** INTRO II ARCO

82

88 **F** Dm PIZZ. VOCAL II Am B^b C Dm

96 Gm C F A Dm

104 Gm C F B^b Am E

112 **G** A Gm /F E^ø7 Dm /C /B^b /A Gm⁷ E^ø7

ARCO REFRAIN II

ΔΙΧΩΣ ΦΟΔΡΑ

CONTRABASS

3

120 A Gm / F E^ø7 Dm / C / B^b / A Gm⁷ A

128 Dm H Gm / F E^ø7 Dm / C / B^b / A Gm⁷

ARCO REFRAIN III

135 E^ø7 A Gm / F E^ø7 Dm / C / B^b / A

142 Gm⁷ A Dm RIT.