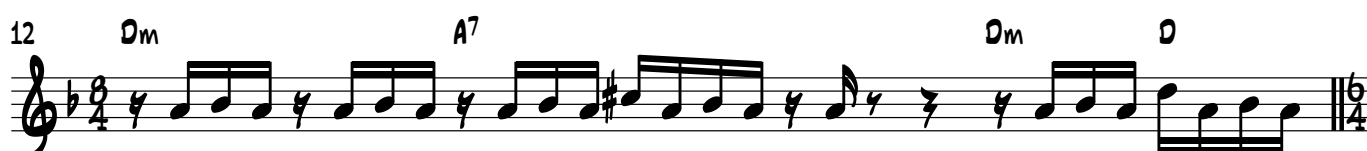
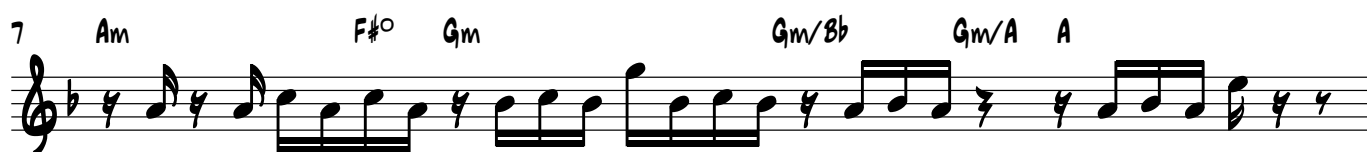
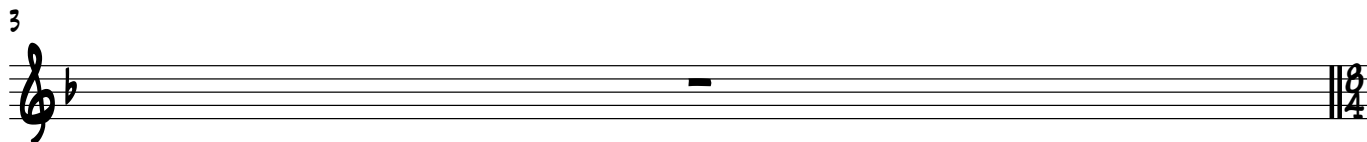


NANTINA KYPIAZH

ΓΙΩΡΓΟΣ ΚΑΖΑΝΤΖΗΣ

♩=60

INTRO I



ΠΕΡΣΕΦΟΝΗ

2
13 Gm E°/G Dm A7 INTRO II Dm Dm E° Dm/F Gm^b 2

15 E° C#° A Dm VOCAL II Dm E°/D Gm/D Dm

17 Gm Gm^b C(add9) F A7 Dm E°/D Gm/A A Dm

19 Am F#° Gm Gm/Bb Gm/A A REFRAIN II Dm D5(add11add9) Bbmaj7 Bb6 Bb(b5) G#°7

21 A Gm D7 Gm Gm/F C F A7 Dm

ΠΕΡΣΕΦΟΝΗ

3 3

23 Gm F#o7 Ebmaj7 G7 Cm Ab7 Gm

24 Dm A7 Dm D Gm Eo/G Dm A7

26 Dm FINALE Gm F#o7 Ebmaj7 G7 Cm Ab7 Gm

28 Dm A7 Dm D

29 Gm Eo/G Dm A7 Dm

30 Dm