

CONTRABASS

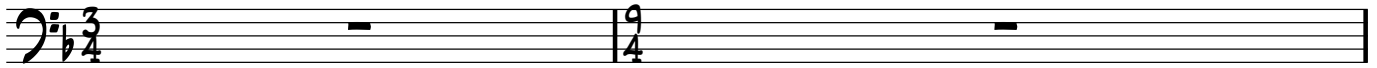
# ΠΕΡΣΕΦΟΝΗ

ΓΙΩΡΓΟΣ ΚΑΖΑΝΤΖΗΣ

NANTINA KYRIAZH

♩=60

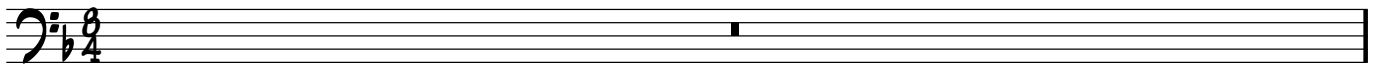
INTRO I



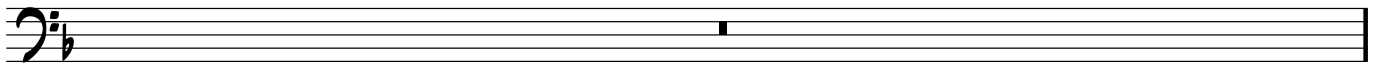
3



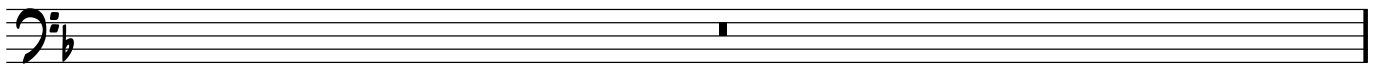
4 VOCAL I



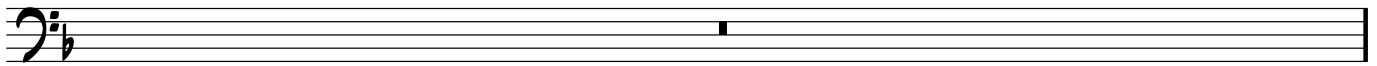
5



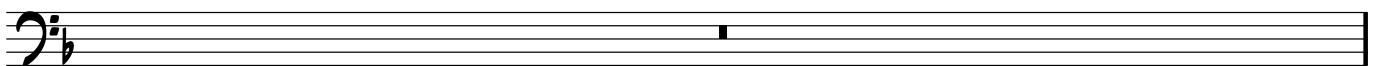
6



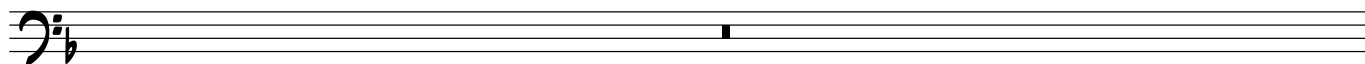
7



8 REFRAIN I



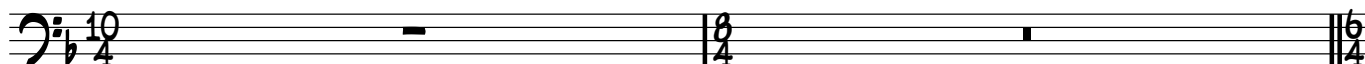
9



10



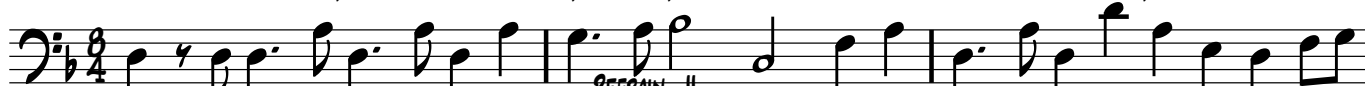
11



13 INTRO || Dm PIZZ. Dm E° Dm/F Gm<sup>b</sup> E° C#° A Dm



16 VOCAL || Dm E°/D Gm/D Dm Gm Gm<sup>b</sup> C(add9) F A7 Dm E°/D Gm/A ADm



19 REFRAIN || Am F#Gm Gm/Bb Gm/A A Dm D<sup>5</sup>(add1)(add9) Bbmaj7 Bb(b5) G#°7 A Gm D7 GmGm/F



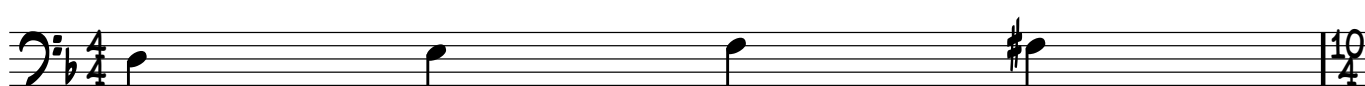
22 C F A7 Dm Gm F#°7 Ebmaj7 G7 Cm Ab7 Gm



24 Dm A7 Dm D Gm E°/G Dm A7



26 Dm



27 FINALE Gm F#°7 Ebmaj7 G7 Cm Ab7 Gm



28 Dm A7 Dm D



29 Gm E°/G Dm A7 Dm



30 Dm

