

# KAI PALI NAI

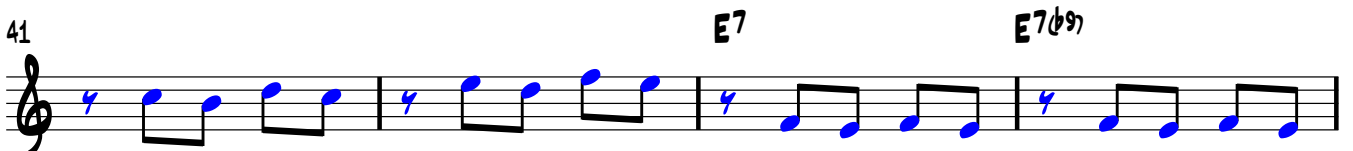
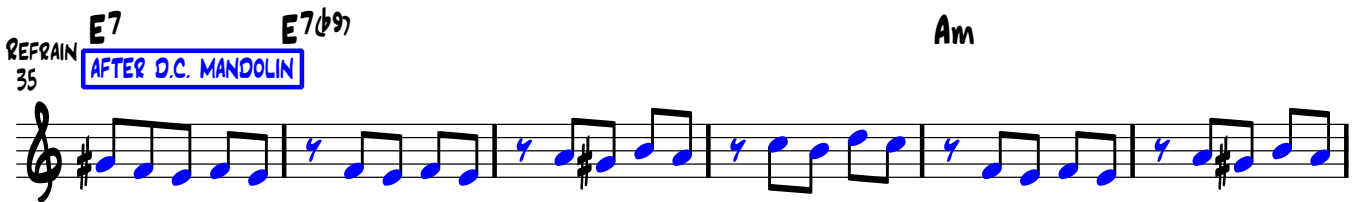
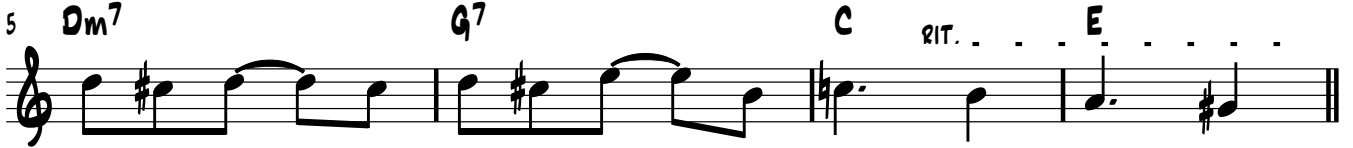
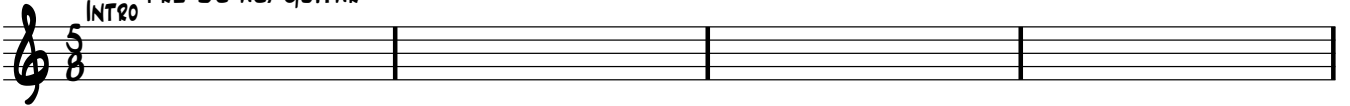
♩=130

Am PRE DC AC. GUITAR  
INTRO

Am/G#

Am/G

A/F#



2

49

Dm7

PRE D.C. MANDOLIN

G<sup>9</sup> KAI PALI NAI

MANDOLIN

Cmaj7

54

Fmaj7

B<sup>0</sup>

58

E7

Am

62

Dm7

G<sup>9</sup>

Cmaj7

69

Fmaj7

B<sup>0</sup>

Em7

E7(#9)

D.S. AL FINE

76

Am

Dm7

G<sup>9</sup>

84

Cmaj7

Fmaj7

B<sup>0</sup>

Em7

91

E7(#9)

Am