

ΠΗΤΕΡ ΠΑΝ

11 ΧΟΥΚ - ΤΙΝΓΚΕΡ

Contrabass

1

ΓΙΑΝΝΗΣ ΚΑΛΑΤΖΟΠΟΥΛΟΣ

ΓΙΩΡΓΟΣ ΚΑΖΑΝΤΖΗΣ

INTRO

Dm $\text{♩} = 160$

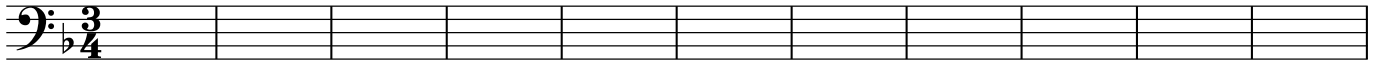
Am

Dm

Am

Gm

F



VOCAL HOOK

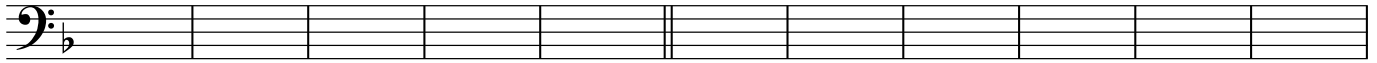
12 G⁵/E

A

Dm

Am

Dm



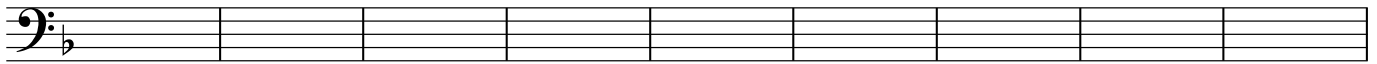
23 Am

Gm

F

D(sus4)/E

G⁵/A



32 D⁵/Bb

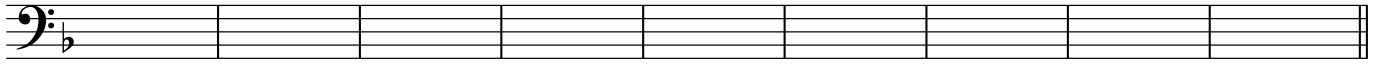
Gm

A⁵

A⁵

A⁵

A⁵



INTRO II

41 Dm

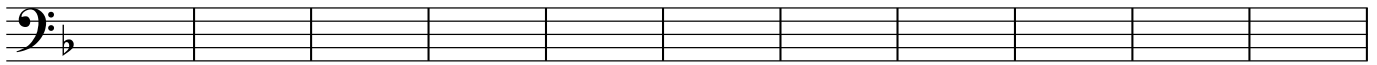
Am

Dm

Am

Gm⁹

Gm⁹/F



VOCAL TINGER

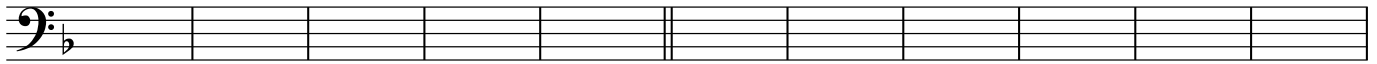
52 G(sus2)/E

A

Dm

Am

Dm



63 Am

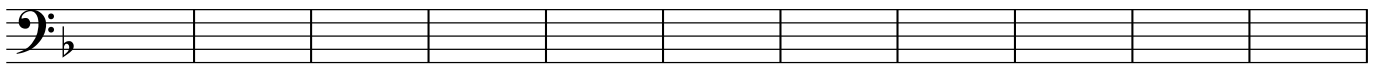
Gm

F

G⁵/E

G⁵/A

D⁵/Bb



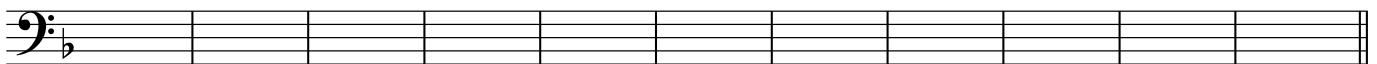
74 Gm(add9)

Bb^{maj7}

C⁹

A(sus4)

A



RF

85 Dm

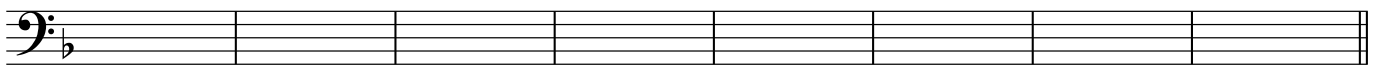
Am/C

Gm/Bb

Am/C

Gm⁷

Am⁷



93 Dm

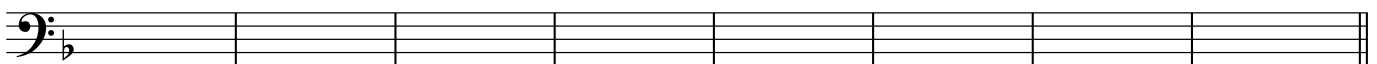
Am/C

Gm/Bb

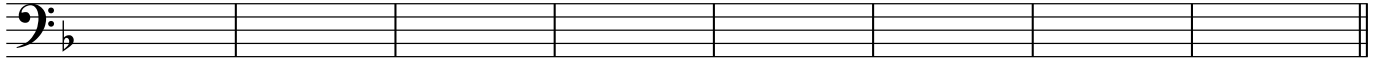
Am/C

Gm⁷

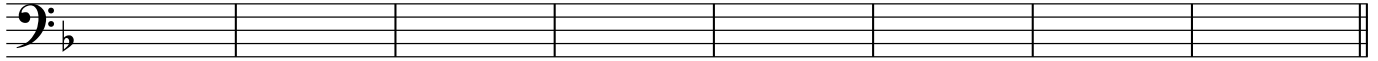
Am⁷



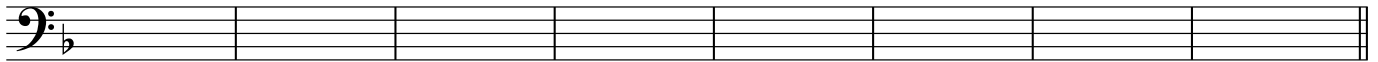
101 Dm Am/C Gm/B \flat Am/C Gm⁷ Am⁷ Am⁷ Am⁷



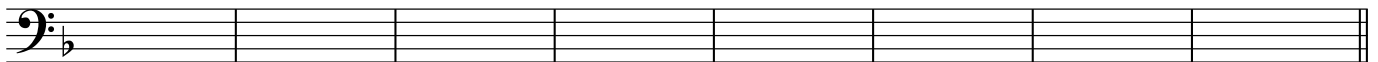
109 Dm Am/C Gm/B \flat Am/C Gm⁷ Am⁷



117 Dm Am/C Gm/B \flat Am/C Gm⁷ Am⁷



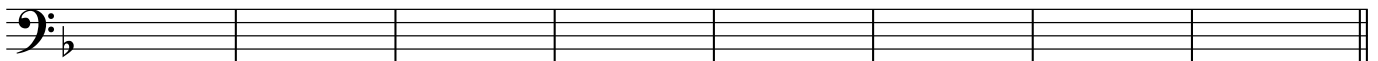
125 Dm Am/C Gm/B \flat Am/C Gm⁷ Am⁷



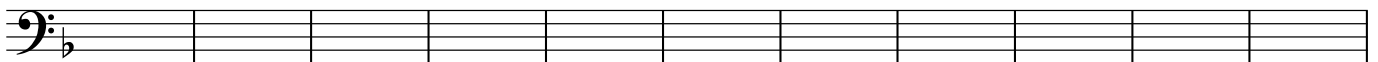
133 Dm Am/C Gm/B \flat Am/C Gm⁷ Am⁷



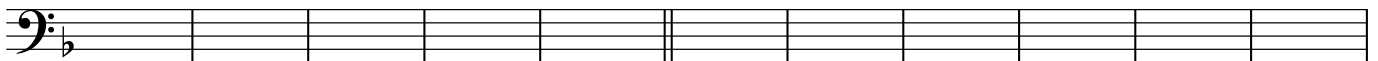
141 Dm Am/C Gm/B \flat Am/C Gm⁷ Am⁷



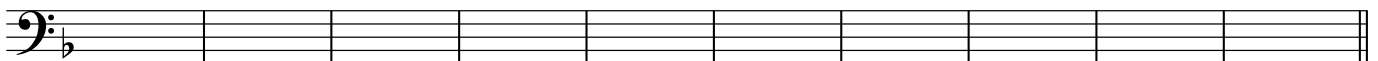
149 Dm Am Dm Am Gm F



160 G⁵/E A Dm Am Dm



171 Am Gm F G⁵/E A



181

